

Maple Leaf WHEELCHAIR

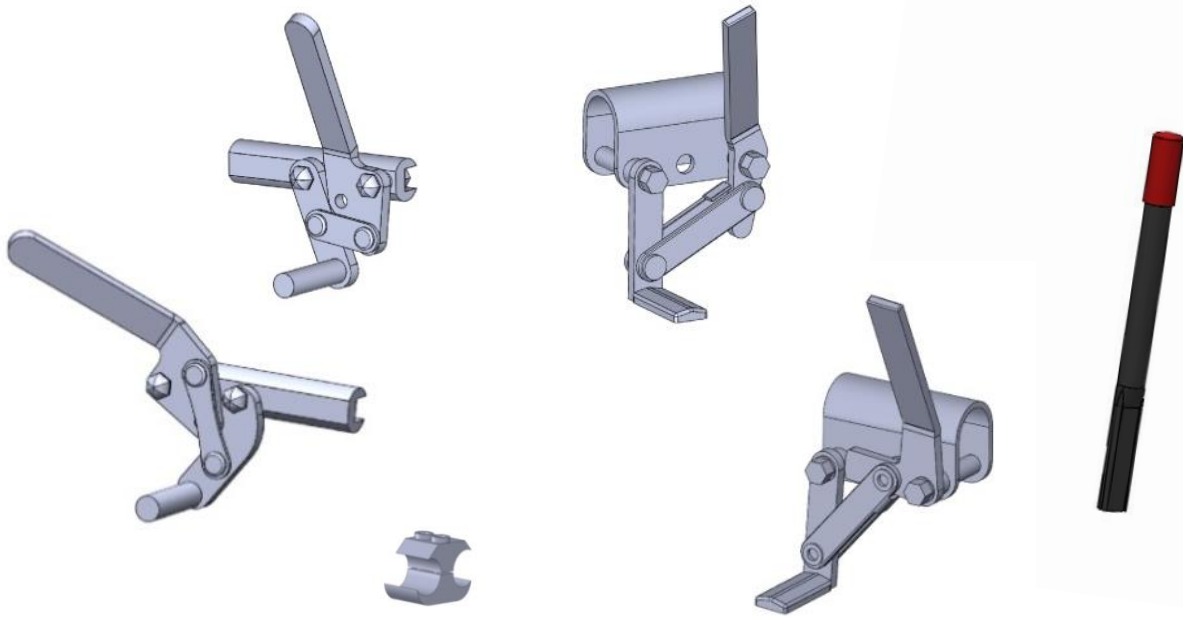


PARTS CATALOGUE WHEEL LOCK

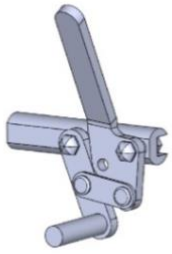




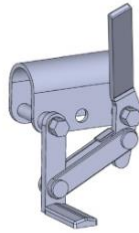


6540 Tomken Road
Mississauga ON L5T 2E9
905.564.2250
905.564.5424
1.800.362.0873
www.mapleleafwheelchair.ca


Wheel Lock



Part No.	Part Name	Part Description	Cost	
B02APTR	Aluminum Pull to Lock R 7/8" Tubing	Aluminum-Pull to Lock type wheel lock for Right Hand Side. Sold with 7/8" Clamp [WL010] (Chair Serial Number needs to be mentioned.)	65/ each	
B02APTL	Aluminum Pull to Lock L 7/8" Tubing	Aluminum-Pull to Lock type wheel lock for Left Hand Side. Sold with 7/8" Clamp [WL010] (Chair Serial Number needs to be mentioned.)		
B02APTR1	Aluminum Pull to Lock R 1" Tubing	Aluminum-Pull to Lock type wheel lock for Right Hand Side. Sold with 1" Clamp [WL011] (Chair Serial Number needs to be mentioned.)		
B02APTL1	Aluminum Pull to Lock L 1" Tubing	Aluminum-Pull to Lock type wheel lock for Left Hand Side. Sold with 1" Clamp [WL011] (Chair Serial Number needs to be mentioned.)		

B05APHTR	Aluminum Push to Lock R 7/8" Tubing	Aluminum-Push to Lock type wheel lock for Right Hand Side. Sold with 7/8" Clamp [WL010] (Chair Serial Number needs to be mentioned.)	65/ each	 
B05APHTL	Aluminum Push to Lock L 7/8" Tubing	Aluminum-Push to Lock type wheel lock for Left Hand Side. Sold with 7/8" Clamp [WL010] (Chair Serial Number needs to be mentioned.)		
B05APHTR1	Aluminum Push to Lock R 1" Tubing	Aluminum-Push to Lock type wheel lock for Right Hand Side. Sold with 1" Clamp [WL011] (Chair Serial Number needs to be mentioned.)		
B05APHTL1	Aluminum Push to Lock L 1" Tubing	Aluminum-Push to Lock wheel lock for Left Hand Side. Sold with 1" Clamp [WL011] (Chair Serial Number needs to be mentioned.)		
BRX16	Brake Clamp 7/8"	Brake Clamps for Wheelchair Tube having a diameter of 7/8" for Aluminum wheel lock only. Used in all standard wheelchair models. (Access, NRG+, NRG+ Recline, Swift, NRG+ Gold, EZ Ride and Commode wheelchair models)		
BRX17	Brake Clamp 1"	Brake Clamps for Wheelchair Tube having a diameter of 1" for Aluminum wheel lock only. Used in all geriatric wheelchair models.		

B01SPTR	Stainless Steel Pull to Lock R	Steel-Pull to Lock type wheel lock for Right Hand Side. (Chair Serial Number needs to be mentioned.)	65/ each	
B01SPTL	Stainless Steel Pull to Lock L	Steel-Pull to Lock type wheel lock for Left Hand Side. (Chair Serial Number needs to be mentioned.)		
B04SPHTR	Stainless Steel Push to Lock R	Steel-Push to Lock type wheel lock for Right Hand Side. (Chair Serial Number needs to be mentioned.)	65/ each	
B04SPHTL	Stainless Steel Push to Lock L	Steel-Push to Lock type wheel lock for Left Hand Side. (Chair Serial Number needs to be mentioned.)		
BRX9	Brake Extension 9"	Brake extension having a length of 9"	30/ each	
BRX6	Brake Extension 6"	Brake extension having a length of 6"		
BRX4	Brake Extension 4"	Brake extension having a length of 4"		
BRX015C	Brake Extension Caps	Caps for the brake extension; standard for all brake extension sizes.	1/ each	

WL007R	One Hand Brake System R Push to Lock	Aluminum Push to Lock type brake operated using Right hand.	280/ set	
WL007L	One Hand Brake System L Push to Lock	Aluminum Push to Lock type brake operated using Left hand.		
WL008R	One Hand Brake System R Pull to Lock	Aluminum Pull to Lock type brake operated using Right hand.		
WL008L	One Hand Brake System L Pull to Lock	Aluminum Pull to Lock type brake operated using Left hand.		